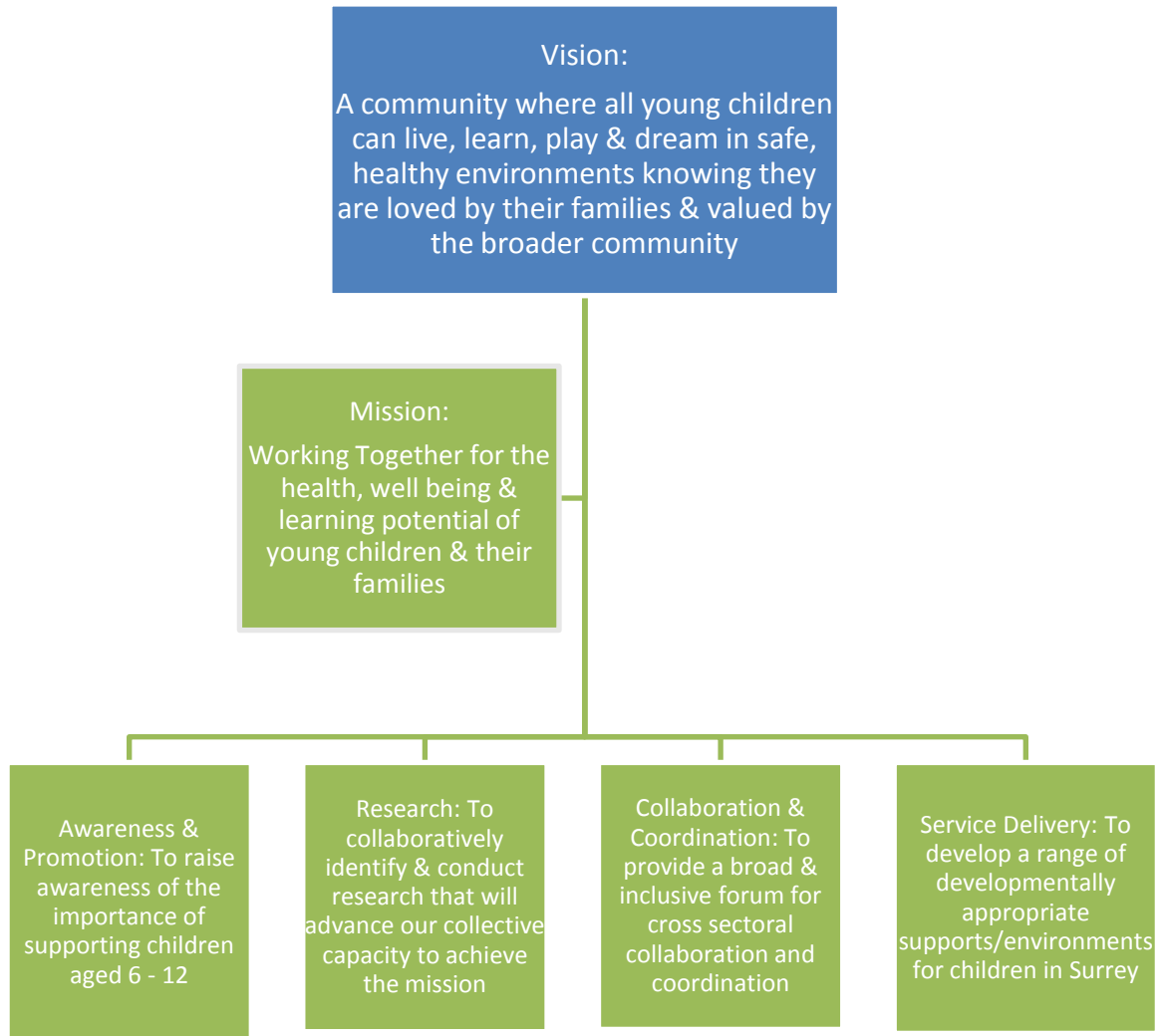


SURREY /WHITE ROCK MIDDLE CHILDHOOD MATTERS STEERING COMMITTEE

TERMS OF REFERENCE (DRAFT SEPTEMBER 2010)

The Surrey – White Rock Middle Childhood Matters Steering Committee is sponsored by the Early Childhood Partners (MCFD, Fraser Health, City of Surrey, Surrey School District, United Way of the Lower Mainland)

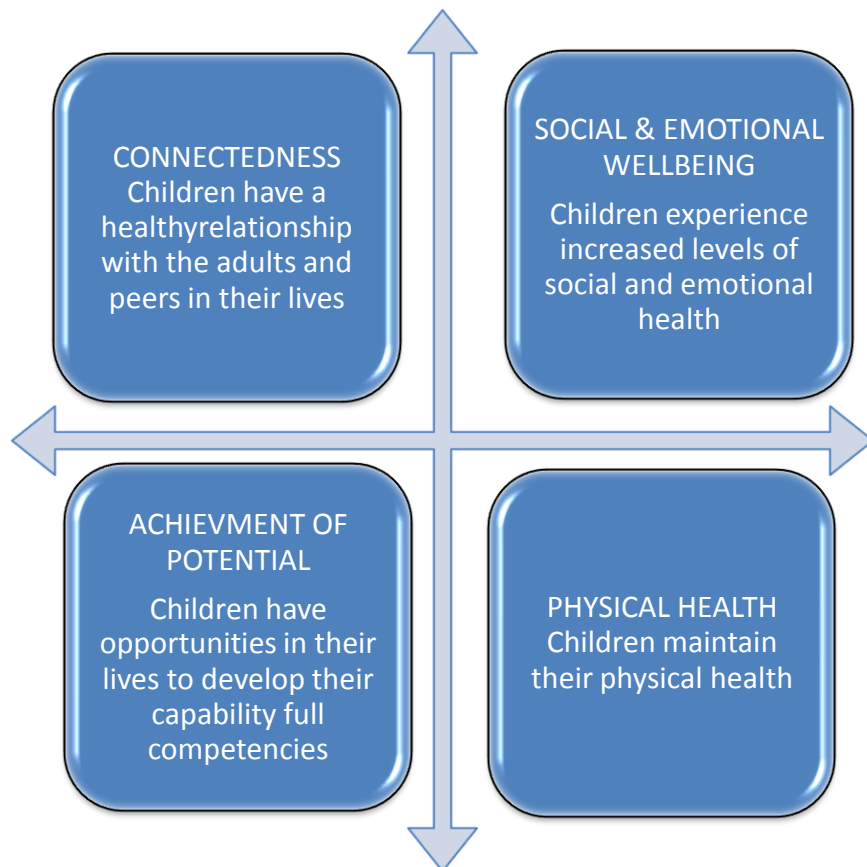


**MIDDLE CHILDHOOD MATTERS – SURREY/WHITE ROCK  
DRAFT STRATEGIC PLAN: JUNE 2011 – JUNE 2012**

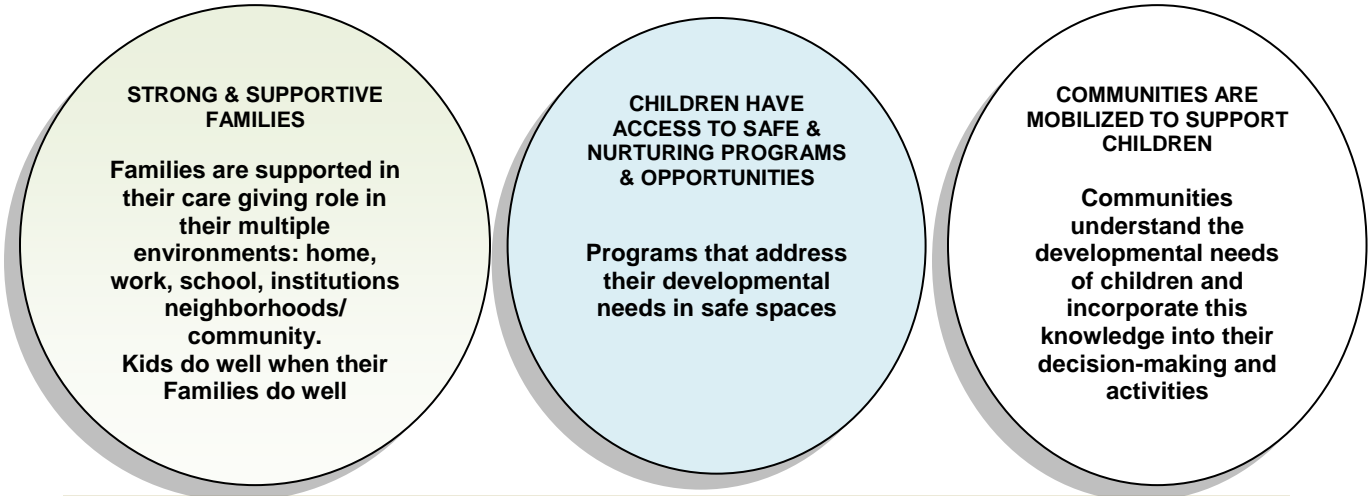
**OUTCOMES FRAMEWORK**

SCHOOL-AGE CHILDREN ARE HEALTHY,  
HAPPY & RESILIENT.

**OUTCOMES FOR CHILDREN**



**OUTCOMES BASED ON THEORY OF CHANGE**



<p><b>INFORMATION FOR FAMILIES</b> Families have access to a broad range of information about supports and services in their community</p>	<p><b>SCHOOL BASED SERVICES</b> There are sufficient school-based program opportunities (before/after school and summer)</p>	<p><b>COMMUNITY MIDDLE CHILDHOOD PLANNING</b> Communities networks and partnerships research, consult on, plan, prioritize, monitor and promote MC</p>
<p><b>FAMILY EDUCATION &amp; SUPPORT</b> Families are supported in their caregiving role through broad access to parenting education and support services</p>	<p><b>CARING SCHOOLS</b> Children are supported during school in a safe learning environment with sufficient relationships and in-school supports</p>	<p><b>CHILD FRIENDLY COMMUNITIES</b> Communities understand "Child Friendly Community" in their context and act on this understanding</p>
<p><b>FAMILY OUTREACH</b> In communities outreach services are provided to reach isolated families</p>	<p><b>COMMUNITY BASED PROGRAMS</b> Local programs address the full range of children's diverse developmental needs and aspirations.</p>	<p><b>PUBLIC AWARENESS</b> Parents, stakeholders and decision makers have a better understanding of children's issues</p>
<p><b>PUBLIC AWARENESS</b> Parents, stakeholders and decision makers have a better understanding of children's issues</p>	<p><b>PROGRAMS FOR VULNERABLE POPULATIONS</b> Targeted programs address the specific needs and challenges of vulnerable children</p>	



			June 2012	
		Production of report (Desktopping and printing)	September 2011	At least 200 copies of report are printed; final document is user friendly and easy to print and access
<b>PUBLIC AWARENESS</b> <b>Parents, stakeholders and decision makers have a better understanding of children's issues</b> <i>Parents, stakeholders &amp; decision makers in Surrey/WR will be informed about the current profile of children(0 – 12) &amp; their families &amp; strategic priorities based on a research &amp; needs/assets assessment</i>	<ul style="list-style-type: none"> <li>• Gap and asset analysis regarding the programs&amp; services for children</li> <li>• Identification of strategic priorities based on the gap &amp; asset analysis</li> <li>• Identification of further research that will benefit supports to children and families</li> <li>• Identification of areas for improved collaboration and coordination</li> <li>• Identification of local models and “promising practices</li> <li>• Child care strategy (0 – 12) based on the child care needs assessment</li> <li>• Key messages about the importance of middle childhood and relevant research on “Surrey/WR”</li> </ul>	<ul style="list-style-type: none"> <li>• Develop and execute a distribution plan</li> <li>• Develop and execute a communications plan with key messages</li> <li>• Convene a public event with stakeholders and decision makers</li> </ul>	<p>October – December 2011</p> <p>October 2011</p> <p>November 2011</p>	<ul style="list-style-type: none"> <li>• Distribution and presentation of report to all significant networks,(CYC, ECP, CF, School district, Fraser health, city, school age child care providers, including the business and labour networks, political arenas &amp; public sector institutions in Surrey/WR</li> <li>• “Families First” Summit co sponsored by the Surrey Board of Trade, City of Surrey and the Surrey/WR ECP/MCM will be held on October 25, 2011</li> <li>• Co sponsorship of an inaugural Child &amp; Family Friendly Business Award</li> <li>• Kids Conference cosponsored with city of Surrey</li> </ul>
<b>COMMUNITY MIDDLE CHILDHOOD PLANNING</b> <b>Communities networks and partnerships research, consult on, plan, prioritize, monitor</b>	<ul style="list-style-type: none"> <li>• Training needs assessment completed by service providers to determine their training needs for individual and cross sectoral training</li> <li>• Inventory/identification of</li> </ul>	Develop a cross sectoral training strategy for MCM professionals	May - July 2012	A training plan developed collaboratively; holding at least 2 training events for the cross sectoral staff who work with MC

<p><b>and promote MC</b>  <i>MCM professionals have collectively identified training needs &amp; opportunities to improve their service delivery to children &amp; families in Surrey/WR</i></p>	<p>existing training opportunities via CCRR/SACA</p>			
--	--	--	--	--

**DRAFT STRATEGIC PLAN: JUNE 2012 – JUNE 2013**

Outcome	Inputs	Activity Plan	Timeline	Outputs
<p><b>COMMUNITY MIDDLE CHILDHOOD PLANNING</b>  <b>Communities, networks and partnerships research, consult on, plan, prioritize, monitor and promote MC</b>  <i>Surrey/WR stakeholders, service providers &amp; networks support an integrated model for families with children 0 - 12</i></p>	<ul style="list-style-type: none"> <li>ECP &amp; MC members have developed an overarching mission and vision to guide the work of the two tables;</li> <li>Restructuring of teams and task forces to support an integrated model</li> </ul>	<ul style="list-style-type: none"> <li>Implement appropriate team structures to support the integrated model; a formal assessment and review process after one year of operating in an integrated model. Adjustments made accordingly</li> <li>Continue to recruit and broaden the membership of the MCM steering committee</li> </ul>	<p>June 2012 – august 2012</p>	<ul style="list-style-type: none"> <li>Implementation of the strategic plan for integration within the “families with young children” umbrella</li> <li>A unique Childrens Partnership initiative is formed and brand is developed; task forces that focus on the issues relating to the common brand (ie promotion and awareness) have been developed</li> </ul>
<p><b>COMMUNITY MIDDLE CHILDHOOD PLANNING</b>  <b>Communities networks and partnerships research, consult on, plan, prioritize, monitor and promote MC</b>  <i>Surrey &amp; White Rock service providers have collectively</i></p>	<p>Strategic priorities that were developed from the Year 1 research (Gap &amp; asset analysis) Child Care strategy recommendations will inform the activity plan</p>	<p>Develop an implementation plan based on the strategic priorities          Develop an implementation plan based on the child care strategy recommendations          Develop formal alignment with the City of Surrey After School strategy</p>	<p>June 2012 – May 2013</p>	<ul style="list-style-type: none"> <li>Identification of further research that will benefit supports to children and families</li> <li>Identification of areas for improved collaboration and coordination</li> <li>Identification of local models and “promising practices” that we will explore further</li> <li>an Implementation plan of the strategic priorities &amp; recommendations</li> </ul>

<i>identified strategic priorities based on research and needs/assets assessments</i>		Develop alignment with CS-P		
<b>PUBLIC AWARENESS</b> <b>Parents, stakeholders and decision makers have a better understanding of children's issues</b> <i>Parents, stakeholders &amp; decision makers in Surrey/WR will be informed about the current profile of children(0 – 12) &amp; their families &amp; strategic priorities based on a research &amp; needs/assets assessment</i>	<ul style="list-style-type: none"> <li>• Inventory of services &amp; programs</li> <li>• Child Care strategy recommendations</li> <li>• Alignment with city of surrey after school program</li> <li>• Identification of target groups and /or neighbourhoods for priority focus</li> </ul>	<ul style="list-style-type: none"> <li>• Develop a brand strategy to promote the importance of middle childhood within a “families” umbrella &amp; include an event to bring people together</li> <li>• Develop tools to support parents with children 6 – 12</li> <li>• Identify target groups for specific focus – ie South Asian community, special needs, Aboriginal</li> <li>• Identify neighbourhoods for priority focus</li> </ul>	June 2012 – May 2013	<ul style="list-style-type: none"> <li>• An “event” that brings people together to celebrate families with young children and promotes the Childrens Partnership</li> <li>• A tool kit for parents with children 6 – 12</li> <li>• An action plan for increased awareness for target groups that could include South Asian community, special needs, Aboriginal</li> <li>• An action plan for priority neighbourhoods</li> <li>• Continue to co sponsor events with the Surrey Board of Trade &amp; sponsor the Child &amp; Family Friendly Business Awards</li> </ul>
<b>COMMUNITY MIDDLE CHILDHOOD PLANNING</b> <b>Communities networks and partnerships research, consult on, plan, prioritize, monitor and promote MC</b> <i>MCM professionals have collectively identified training needs &amp; opportunities to improve their service delivery to children &amp; families in Surrey/WR</i>	<ul style="list-style-type: none"> <li>• Training needs assessment completed by service providers to determine their training needs for individual and cross sectoral training</li> <li>• Inventory/identification of existing training opportunities via CCRR/SACA</li> <li>• Assessment of previous years training &amp; adjustments to plan</li> </ul>	<ul style="list-style-type: none"> <li>• Revise existing cross sectoral training strategy for MCM professionals</li> </ul>	September 2012 – May 2013	<ul style="list-style-type: none"> <li>• A training plan developed collaboratively; holding at least 2 training events for the cross sectoral staff who work with MC</li> </ul>

DRAFT STRATEGIC PLAN JUNE 2013 – JUNE 2014

Outcome	Inputs	Activity Plan	Timeline	Outputs
<p><b>COMMUNITY MIDDLE CHILDHOOD PLANNING Communities networks and partnerships research, consult on, plan, prioritize, monitor and promote MC</b> <i>Surrey &amp; White Rock service providers have collectively identified strategic priorities based on research and needs/assets assessments</i></p>	<ul style="list-style-type: none"> <li>Strategic priorities that were developed from the Year 1 research (Gap &amp; asset analysis)</li> <li>Child Care strategy recommendations from 2012 will inform the activity plan</li> </ul>	<ul style="list-style-type: none"> <li>Update &amp; revise an implementation plan based on the strategic priorities</li> <li>Update &amp; revise an implementation plan based on the child care strategy recommendations</li> <li>Review &amp; adjust formal alignment with the City of Surrey After School strategy</li> <li>Review &amp; adjust collaboration with CS-P</li> <li>Continue to recruit and expand the MCM membership</li> </ul>	<p>June 2013 – June 2014</p>	<ul style="list-style-type: none"> <li>Identification of further research that will benefit supports to children and families</li> <li>Identification of areas for improved collaboration and coordination</li> <li>Identification of local models and “promising practices” that we will explore further</li> <li>an Implementation plan of the strategic priorities &amp; recommendations</li> </ul>
<p><b>PUBLIC AWARENESS Parents, stakeholders and decision makers have a better understanding of children’s issues</b> <i>Parents, stakeholders &amp; decision makers in Surrey/WR will be informed about the current profile of children(0 – 12) &amp; their families &amp; strategic priorities based on a research &amp; needs/assets assessment</i></p>	<ul style="list-style-type: none"> <li>Inventory of services &amp; programs</li> <li>Child Care Strategy recommendations</li> <li>City after school strategy</li> <li>Action plans from previous work with target groups and priority neighbourhoods</li> </ul>	<ul style="list-style-type: none"> <li>Convene an event for parents or service providers that reflects the target groups or priority neighbourhoods</li> <li>Revise or adapt parent tool kit</li> <li>Identify additional supports for parents</li> </ul>	<p>June 2013 – June 2014</p>	<ul style="list-style-type: none"> <li>An revised action plan for increased awareness for target groups that could include South Asian community, special needs, Aboriginal</li> <li>A revised action plan for priority neighbourhoods</li> </ul>
<p><b>COMMUNITY MIDDLE CHILDHOOD PLANNING Communities networks and</b></p>	<ul style="list-style-type: none"> <li>Training needs assessment completed by service providers to determine their</li> </ul>	<ul style="list-style-type: none"> <li>Revise existing cross sectoral training strategy for MCM professionals</li> </ul>	<p>September 2013 – May 2014</p>	<ul style="list-style-type: none"> <li>A training plan developed collaboratively; holding at least 2 training events for the</li> </ul>



<p><b>partnerships research, consult on, plan, prioritize, monitor and promote MC</b>  <i>MCM professionals have collectively identified training needs &amp; opportunities to improve their service delivery to children &amp; families in Surrey/WR</i></p>	<p>training needs for individual and cross sectoral training</p> <ul style="list-style-type: none"> <li>• Inventory/identification of existing training opportunities via CCRR/SACA</li> <li>• Assessment of previous years training &amp; adjustments to plan</li> </ul>			<p>cross sectoral staff who work with MC</p>
---	---	--	--	--