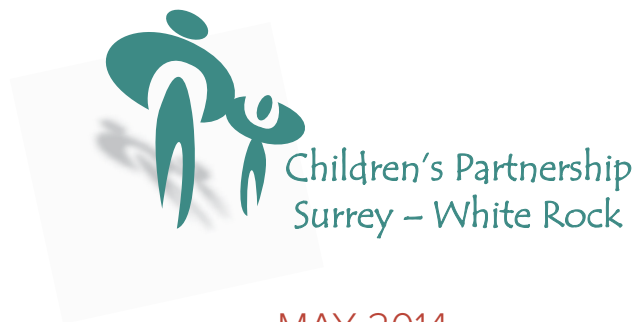


A PROFILE OF  
**FAMILIES, CHILDREN AND YOUTH  
IN SURREY – WHITE ROCK**



MAY 2014

[www.childrenpartnershipsurreywr.com](http://www.childrenpartnershipsurreywr.com)



---

## PREFACE

---

This profile updates a similar report issued in 2009 and presents demographic information from the 2011 census. Readers should be aware that compared to the 2006 Census, major changes occurred in the methodology of the 2011 Census. In 2006, a mandatory short questionnaire was completed by 80 percent of Canadian households, and an additional mandatory long questionnaire (which included the short form questions) was completed by the remaining 20 percent of the population. The 2011 Census had a single ten-item questionnaire that was completed by all households. This was followed by the voluntary National Household Survey, which was distributed to one third of Canadian households.

The NHS estimates are derived from a voluntary survey and are therefore subject to potentially higher non-response error than those derived from the 2006 census long form. While larger communities were pretty much identical in 2006 and 2011, Statistics Canada says that for smaller areas “there can be large discrepancies between the 2011 census population count and NHS population estimate May 2014.”

---

## ACKNOWLEDGMENT

---

### SPECIAL THANKS ARE EXTENDED TO THE FOLLOWING INDIVIDUALS IN THE DEVELOPMENT OF THIS REPORT.

Stuart Jones and Andrew Dong, City of Surrey Planning Department  
Alison Bledsoe, City of Surrey, IBM Project,  
Laura Soon, MCFD  
Sara Grant, Manager, Youth Services, Surrey Libraries  
Umur Olcay, Manager, Facilities and Demographics Planning, School District #36 (Surrey)  
Brenda Neveau, Senior Research Analyst, School District #36 (Surrey)  
Pat Horstead, Assistant Superintendent, School District #36 (Surrey)  
Diana Grill, Population Health Observatory, Fraser Health  
Barry Forer, Human Early Learning Partnership, UBC  
Jerome Thibaudeau, City of Surrey, Parks, Recreation and Culture

This profile was commissioned by the Children’s Partnership Surrey-White Rock to serve as a planning tool for public partners, researchers, educators, institutes, community agencies and business and to shine a spotlight on families and children in Surrey-White Rock.

Research and Report compiled by Jenny Cleathero.  
Children’s Partnership Surrey – White Rock Coordinator, Susan Papadionissiou  
Early and Middle Childhood, Community Development Coordinator, MCFD, Laura Soon

## INTRODUCTION

The Children’s Partnership of Surrey – White Rock members work together to support the health, well-being and learning potential of children during the first twelve years of life, in collaboration with families and community organizations. For more about our work see:

[www.childrenspartnershipsurreywr.com](http://www.childrenspartnershipsurreywr.com)

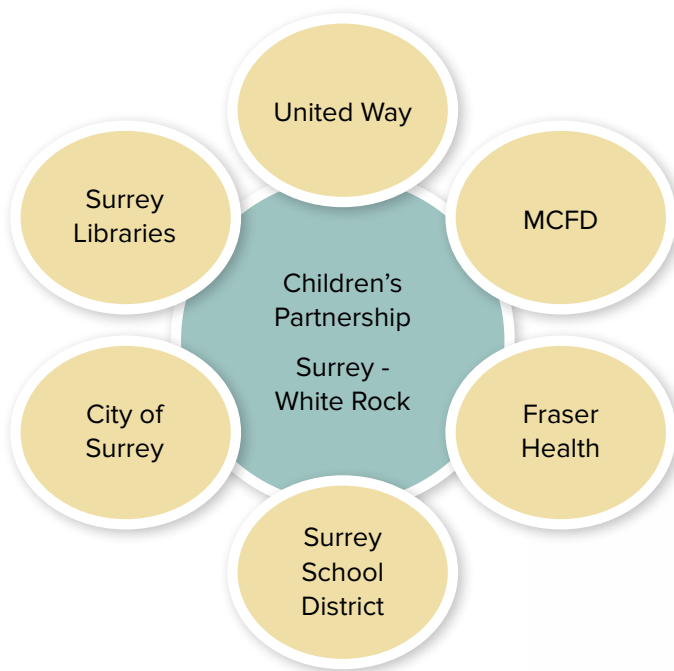
### VISION

A community where all children can live, learn, play and dream in safe, healthy surroundings, knowing they are loved by their families and valued by the broader community

### VALUES

Healthy Child Development  
Equity & Inclusion  
Shared Responsibility  
Collaboration

### FUNDING PARTNERS (MOU)



## STRATEGIC PRIORITIES 2014 - 201

**GOAL:** To ensure equitable access to child development services for all families (includes the continuum of ecd/early learning supports & middle childhood supports)

### SUPPORT VULNERABLE POPULATIONS:

Aboriginals  
Refugees  
Immigrants/Newcomers  
Families Living In Entrenched Poverty

**GOAL:** To Strengthen the systems of support that can improve children’s social/emotional well-being

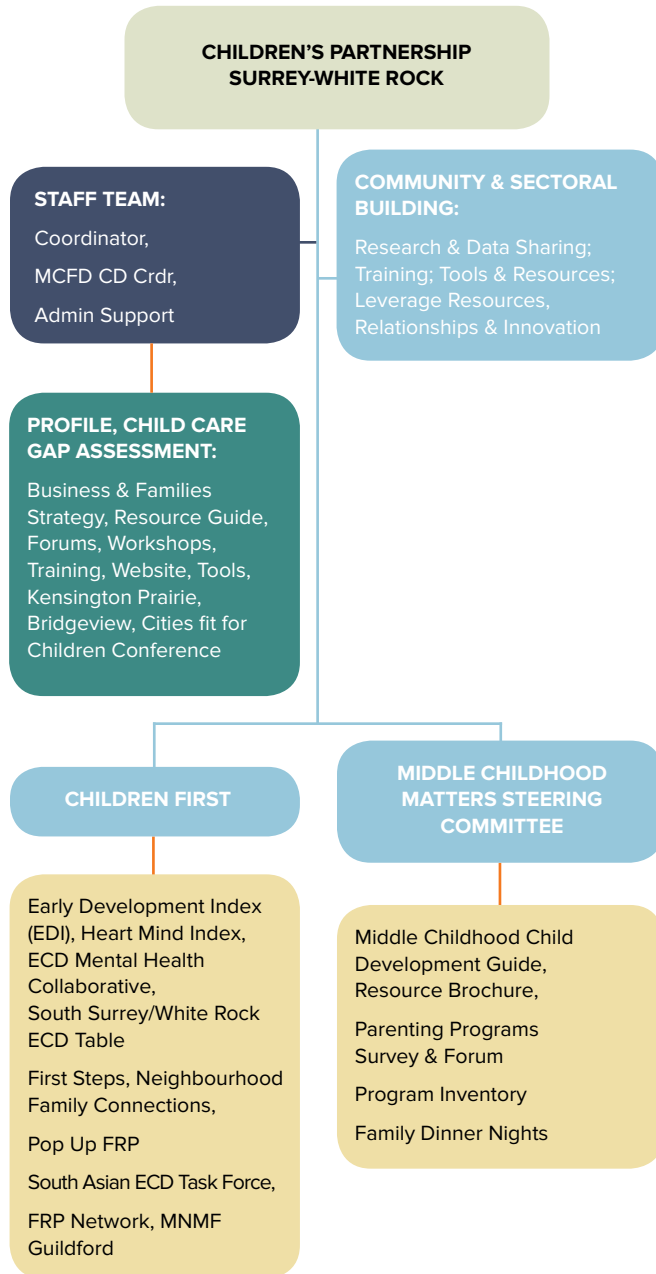
### SUPPORT CHILDREN’S SOCIAL & EMOTIONAL WELL BEING

**GOAL:** To promote the value and importance of child development (0-12) to later health, well-being, learning & success and work together with families to create a better future

### PROMOTION AND AWARENESS ABOUT THE VALUES/IMPORTANCE OF CHILD DEVELOPMENT (0 - 12)



## OPERATING MODEL



### FLEETWOOD

Stable community with lowest level of mobility (13%); Amongst visible minorities, South Asian is the dominant group in this community; Punjabi is the prevailing non-official language; 38% of kindergarten students are ESL; One third vulnerable on EDI.

### GUILDFORD

Lowest growth over 5 years (13%); One in four children and youth living in poverty; High influx of immigrants from 2000-11; Chinese are the dominant visible minority group; Tagalog, Mandarin and Korean are the principal non-official languages. 37% of children are vulnerable on EDI

### NEWTON

Nearly one third of Surrey's growth occurred in Newton from 2006-11; Almost one third of all children and youth in Surrey/ White Rock live here; Largest number of multi-family households; 48% are foreign born; 67% speak Punjabi; 45% of elementary students are ESL learners; 39% vulnerable on EDI.

### SOUTH SURREY

Highest level of schooling; High rate of home ownership; Community with highest proportion of families with youth 15-17 at home (14%) and one of the lowest with children under 6 at home (18%); One quarter are foreign born; 29% vulnerable on EDI.

### WHALLEY

12 of the school district's 25 inner city schools are in this community; 47% of elementary students in this community are ESL; Highest Aboriginal population; High proportion of renters (43%); One in four children and youth living in poverty. 37% of children are vulnerable

## HIGHLIGHTS OF COMMUNITY INDICATORS

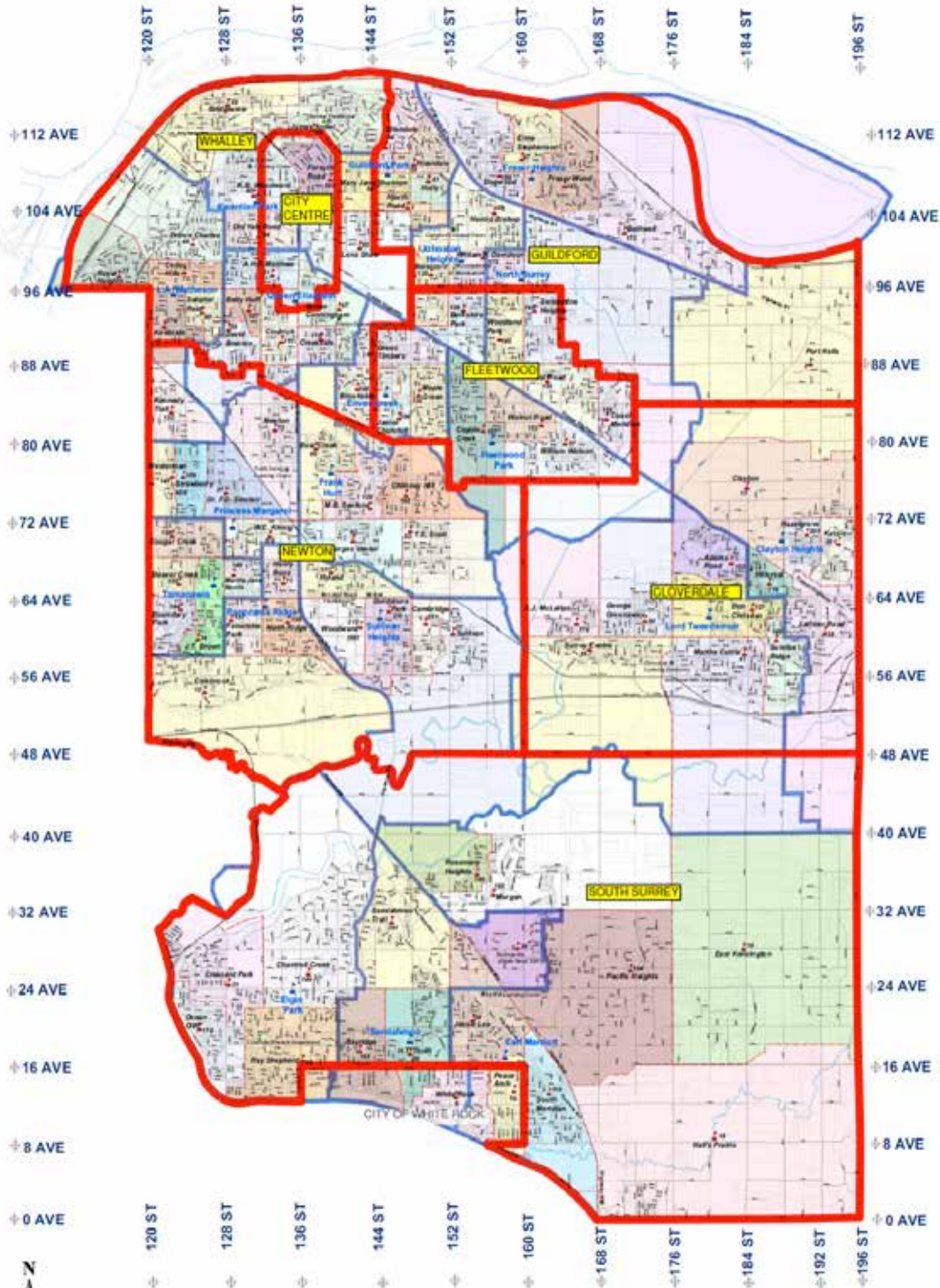
### CLOVERDALE

Total population increased by 44% over five years; Significant increase in numbers of young children; Highest rate of home ownership; 79% with English mother tongue; only 20% foreign born; 28% vulnerability on the EDI.

### WHITE ROCK

The City of White Rock has shown little growth (3%) over the 5 years; No real increase in numbers of children and youth; One in five are non-family households; One third are renter households; Low visible minority population (11%). 27% of children are vulnerable

2013-2104 School Catchment Boundaries overlay with City of Surrey Communities



2013-2014 Sch

## POPULATION GROWTH

The population of Metro Vancouver was 2,313,330 in 2011, up 9.3% from 2006

Surrey is one of the fastest growing cities in Canada and the fastest growing city in Metro Vancouver. Surrey and White Rock together had a population close to 488,000 in 2011, representing a percentage change of 19% from 2006. In comparison, Vancouver's population was 603,500 in 2011, up only 4.4% from 5 years previously.

Over the next 30 years the City of Surrey is projected to add another quarter of a million people to its population so that by 2041 one in five residents of Metro Vancouver will live in the area.

Six communities make up Surrey: Cloverdale, Fleetwood, Guildford, Newton, South Surrey and Whalley (which, in most of the following tables, includes the city centre). Demographic data is presented for each of these communities as well as for the City of White Rock.

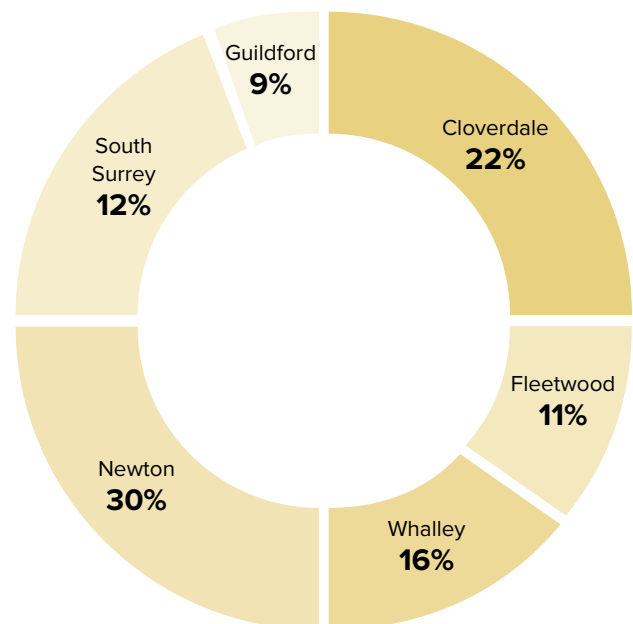
### OVERALL THE POPULATION OF SURREY/ WHITE ROCK GREW BY JUST OVER 76,000 FROM 2006 TO 2011.

	2011 pop	2006 pop	Increase	% Increase
Cloverdale	54,390	37,705	16,685	44%
Fleetwood	59,160	50,795	8,365	16%
Guildford	58,180	51,660	6,520	13%
Newton	132,550	109,475	23,075	21%
South Surrey	69,060	59,935	9,125	15%
Whalley	94,920	82,880	12,040	15%
<b>City of Surrey</b>	<b>468,250</b>	<b>392,450</b>	<b>75,800</b>	<b>19%</b>
White Rock	19,340	18,755	585	3%
<b>Total Surrey/ WR</b>	<b>487,600</b>	<b>411,205</b>	<b>76,395</b>	<b>19%</b>

The population of Cloverdale increased by 44%; the pie chart shows that as a proportion of all growth in the City of Surrey, that community contributed 22%.

Nearly one third of Surrey's growth from 2006 to 2011 was in Newton.

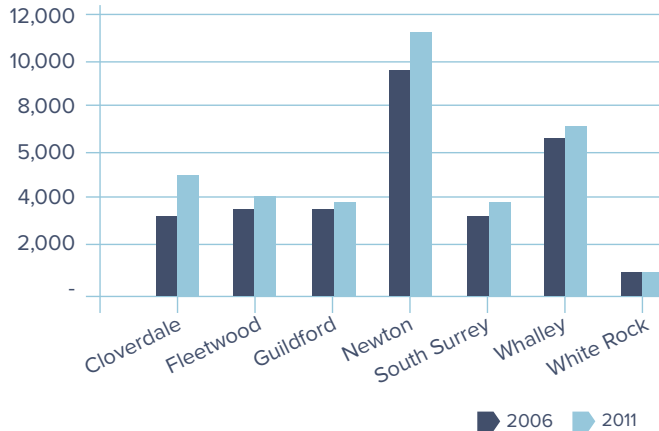
### TOTAL GROWTH IN SURREY, 2006 - 2011 WAS 75, 800



## CHILDREN AND YOUTH BY AGE

### CHILDREN UNDER 6 YEARS OF AGE

#### CHILDREN 0-6, 2006 AND 2011



Overall there were 5,000 more children under the age of 6 in 2011 with a total of 35,600.

Cloverdale showed the highest percentage increase in the number of children in this age group with the proportion growing from 10% to 14% (1,800 more children).

As a proportion of all children aged 0-5 in the total population of the actual community, Cloverdale is the highest at 9.3%, then Newton at 8.6%.

In terms of actual numbers, one third of all children in this age group in Surrey /White Rock live in Newton.

#### POPULATION AGED 0-5 YEARS FOR SURREY COMMUNITIES, 2011

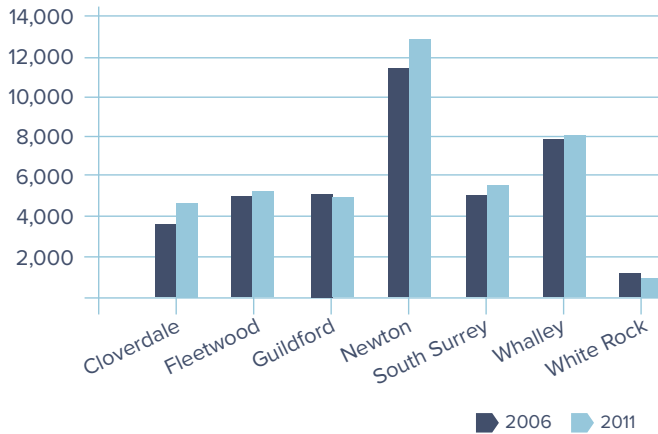
Community	Total population	Total 0-5	% 0-5 within community	% 0-5 within total pop.
Cloverdale	54,390	5,063	9.3	14.2
Fleetwood	59,160	4,021	6.8	11.3
Guildford	58,180	3,655	6.3	10.3
Newton	132,550	11,371	8.6	31.9
South Surrey	69,060	3,651	5.3	10.3
Whalley	94,920	7,159	7.5	20.1
<b>City of Surrey</b>	<b>468,250</b>	<b>34,920</b>	<b>7.5</b>	<b>--</b>
White Rock	19,340	678	3.5	1.9
<b>Total SRY / WR</b>	<b>487,590</b>	<b>35,598</b>	<b>7.3</b>	<b>100.0</b>

Source: Statistics Canada 2011 Census



## CHILDREN AGED 6 TO 12

### CHILDREN 6-12, 2006 AND 2011



In the middle years there were nearly 3,000 more children between 2006 - 2011.

Cloverdale and Newton showed the largest increase in absolute numbers, an increase of 1,242 and 1,429 respectively.

Across the communities the proportion of 6-12 year olds was fairly consistent around 8-9%, but again the majority in this age group lived in Newton.

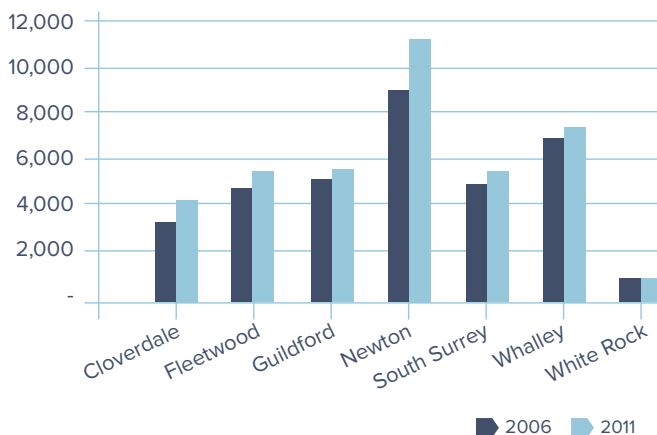
### POPULATION AGED 6-12 YEARS FOR SURREY COMMUNITIES, 2011

Community	Total population	Total 6-12	% 6-12 within community	% 6-12 within total population
Cloverdale	54,390	5,045	9.3	11.9
Fleetwood	59,160	5,422	9.2	12.8
Guildford	58,180	5,139	8.8	12.1
Newton	132,550	12,776	9.6	30.2
South Surrey	69,060	5,147	7.5	12.2
Whalley	94,920	7,985	8.4	18.9
<b>City of Surrey</b>	<b>468,250</b>	<b>41,511</b>	<b>8.9</b>	--
White Rock	19,340	840	4.3	2.0
<b>Total SRY/ WR</b>	<b>487,590</b>	<b>42,351</b>	<b>8.7</b>	<b>100.0</b>

Source: Statistics Canada 2011 Census

## YOUTH AGED 13-18

### CHILDREN 13-18, 2006 AND 2011



There were 5,000 more young people aged 13-18 in Surrey and White Rock.

Newton saw an increase of 1,860 over the five years.

Proportions by community ranged from 4.6% in White Rock to 9.7% in Guildford.



**POPULATION AGED 13-18 YEARS FOR SURREY COMMUNITIES, 2011**

Community	Total Population	Total 13-18	% 13-18 within community	% 13-18 within total population
Cloverdale	54,390	4,077	7.5	10.2
Fleetwood	59,160	5,577	9.4	14.0
Guildford	58,180	5,635	9.7	14.1
Newton	132,550	10,978	8.3	27.5
South Surrey	69,060	5,482	7.9	13.7
Whalley	94,920	7,346	7.7	18.4
<b>City of Surrey</b>	<b>468,250</b>	<b>39,089</b>	<b>8.3</b>	<b>--</b>
White Rock	19,340	887	4.6	2.2
<b>Total SRY/ WR</b>	<b>487,590</b>	<b>39,976</b>	<b>8.2</b>	<b>100.0</b>

Source: Statistics Canada 2011 Census

**FAMILY STRUCTURE**

85% of children lived in two parent families.

Within the 14.9% of lone parent families, there were 16,000 headed by women and another 4,000 by men.

**SINGLE AND TWO PARENT FAMILIES**

Community	Total Families	No. couple families	No. lone parent families	% lone parents	Female lone parent	Male lone parent
Cloverdale	15,670	13,555	2,115	13.5%	1,670	445
Fleetwood	16,455	14,110	2,350	14.3%	1,870	480
Guildford	16,100	13,280	2,820	17.5%	2,240	580
Newton	36,965	31,705	5,265	14.2%	4,255	1,010
South Surrey	20,510	18,070	2,445	11.9%	1,955	490
Whalley	25,355	20,815	4,540	17.9%	3,565	975
<b>City of Surrey</b>	<b>131,065</b>	<b>111,540</b>	<b>19,530</b>	<b>14.9%</b>	<b>15,555</b>	<b>3,975</b>
White Rock	5,140	4,350	790	15.4%	620	170
<b>Total SRY/ WR</b>	<b>136,205</b>	<b>115,890</b>	<b>20,320</b>	<b>14.9%</b>	<b>16,175</b>	<b>4,145</b>

\*Couple families include married couples and common-law families

Source: Statistics Canada 2011 Census



## CHILDREN AND YOUTH LIVING AT HOME

One third of all children living at home were in their middle childhood years. This is consistent across all communities.

In rank order the proportions of children under 6 were Cloverdale (28%), Newton (23%), Whalley (22%), White Rock (20%), Fleetwood and South Surrey (18%) and Guildford (17%).

Higher proportions of youth were evident in South Surrey (14%), Guildford (14%) and Fleetwood (13%). Cloverdale had the lowest youth population living at home at 11%.

### NUMBER AND AGE OF CHILDREN LIVING AT HOME IN SURREY/WHITE ROCK BY COMMUNITY, 2011

Community	Total number of children at home	Children at home under six years of age	Children at home aged 6-14	Children at home aged 15-17
Cloverdale	18,235	5,085	27.9%	6,325
Fleetwood	21,655	3,925	18.1%	7,040
Guildford	21,030	3,530	16.8%	6,795
Newton	48,425	11,305	23.3%	16,240
South Surrey	19,830	3,600	18.2%	6,760
Whalley	31,755	7,045	22.2%	10,220
<b>City of Surrey</b>	<b>160,930</b>	<b>34,495</b>	<b>21.4%</b>	<b>53,390</b>
White Rock	3,510	695	19.8%	1,095
<b>Total SRY/ WR</b>	<b>164,440</b>	<b>35,190</b>	<b>21.4%</b>	<b>54,485</b>

Source: Statistics Canada 2011 Census



## HOUSEHOLD TYPES

Over 70% of households in Fleetwood, South Surrey and Cloverdale were single family. The largest number of multifamily households was in Newton at 14%.

Half of all White Rock households were non-family households, perhaps a sign of the seniors population in that community, where many live alone. One third of households (33%) were non-family households in Whalley. Since this includes the city centre this could be evidence of younger singles living in that high density neighbourhood.

### HOUSEHOLDS BY TYPE FOR SURREY/WHITE ROCK BY COMMUNITY, 2011

Community	Total households by type	Single family		Multiple-family		Non-family	
Cloverdale	17,525	12,730	72.6%	735	4.2%	4,060	23.2%
Fleetwood	16,195	11,350	70.1%	1,630	10.1%	3,215	19.9%
Guildford	18,055	12,545	69.5%	1,005	5.6%	4,505	25.0%
Newton	34,760	22,390	64.4%	4,945	14.2%	7,425	21.4%
South Surrey	25,730	18,320	71.2%	545	2.1%	6,870	26.7%
Whalley	28,535	16,445	57.6%	2,825	9.9%	9,270	32.5%
<b>City of Surrey</b>	<b>140,810</b>	<b>93,780</b>	<b>66.6%</b>	<b>11,675</b>	<b>8.3%</b>	<b>35,345</b>	<b>25.1%</b>
White Rock	9,605	4,625	48.2%	125	1.3%	4,855	50.5%
<b>Total SRY/ WR</b>	<b>150,415</b>	<b>98,405</b>	<b>65.4%</b>	<b>11,800</b>	<b>7.8%</b>	<b>40,200</b>	<b>26.7%</b>

Source: Statistics Canada 2011 Census

**Family household** refers to a household that contains at least one census family, that is, a married couple with or without children, or a couple living common-law with or without children, or a lone parent living with one or more children (lone-parent family). **One-family household** refers to a single census family (with or without other persons) that occupies a private dwelling. **Multiple-family household** refers to a household in which two or more census families (with or without additional persons) occupy the same private dwelling. Family households may also be divided based on the presence of persons not in a census family. This table does not include this category

**Non-family household** refers to either one person living alone in a private dwelling or to a group of two or more people who share a private dwelling, but who do not constitute a census family.

## IMMIGRATION

40% of the residents of Surrey and White Rock were born outside Canada. The highest proportion was in Newton at 48%. Guildford, Fleetwood and Whalley were close behind at 45%. Cloverdale was the lowest at 20%.

### FOREIGN BORN POPULATION FOR SURREY/WHITE ROCK COMMUNITIES, 2011

Community	Total population	Non-immigrants	Immigrants	% Foreign Born
Cloverdale	54,160	42,810	10,970	20.3%
Fleetwood	58,190	31,460	26,035	44.7%
Guildford	58,280	30,815	26,620	45.7%
Newton	131,800	67,110	63,685	48.3%
South Surrey	67,360	49,195	17,705	26.3%
Whalley	93,555	49,350	42,825	45.8%
<b>City of Surrey</b>	<b>463,340</b>	<b>270,735</b>	<b>187,840</b>	<b>40.5%</b>
White Rock	18,535	13,865	4,535	24.5%
<b>Total SRY/ WR</b>	<b>481,875</b>	<b>284,600</b>	<b>192,375</b>	<b>39.9%</b>

Source: Statistics Canada, National Household Survey, 2011

Of the 192,375 immigrants in Surrey and White Rock, the period of immigration varied according to community.

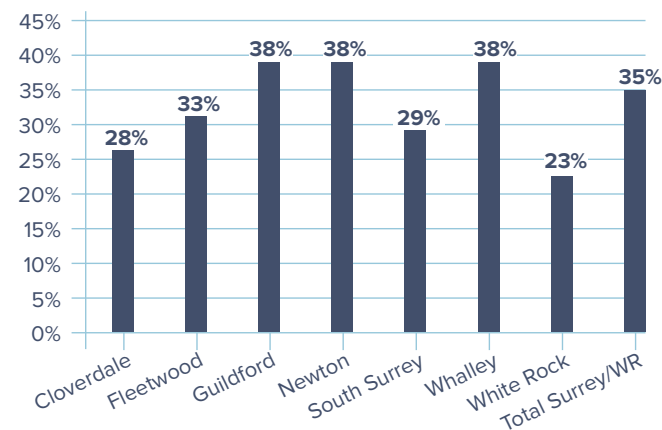
In White Rock, South Surrey and Cloverdale the majority came to Canada before 1991 (66%, 53% and 45% respectively). In most other communities almost an equal third have arrived in each decade since 1991.

### IMMIGRANT POPULATION BY PERIOD OF IMMIGRATION FOR SURREY/WHITE ROCK COMMUNITIES 2011

Community	Total immigrants	Before 1991		1991 to 2000		2001 to 2011	
		Count	Percentage	Count	Percentage	Count	Percentage
Cloverdale	10,970	4,965	45.3%	2,975	27.1%	3,035	27.7%
Fleetwood	26,035	9,830	37.8%	7,710	29.6%	8,490	32.6%
Guildford	26,620	8,195	30.8%	8,180	30.7%	10,245	38.5%
Newton	63,685	19,580	30.7%	20,215	31.7%	23,900	37.5%
South Surrey	17,705	9,325	52.7%	3,295	18.6%	5,085	28.7%
Whalley	42,825	13,125	30.6%	13,480	31.5%	16,215	37.9%
<b>City of Surrey</b>	<b>187,840</b>	<b>65,015</b>	<b>34.6%</b>	<b>55,865</b>	<b>29.7%</b>	<b>66,965</b>	<b>35.7%</b>
White Rock	4,535	2,985	65.8%	495	10.9%	1,050	23.2%
<b>Total SRY/ WR</b>	<b>192,375</b>	<b>68,000</b>	<b>35.3%</b>	<b>56,360</b>	<b>29.3%</b>	<b>68,015</b>	<b>35.4%</b>

Source: Statistics Canada, National Household Survey, 2011

### RECENT IMMIGRATION (2001 - 2011)



More than one in three immigrants in Guildford, Newton and Whalley arrived in the last decade.

The top source countries were India, the Philippines and China.

### AGE AT IMMIGRATION

The education outcomes of a cohort of immigrants who arrived in Canada as children were examined using the 2006 Census, and it was found that there may be a distinct pattern in the risk of immigrant children graduating from high school according to age at arrival.

The risks of not completing high school do not vary according to age at arrival up to about the age of 9, with children arriving after that age appearing to face a distinct and growing increase in the risk that they will not graduate.

Children who migrate may face different challenges in attaining high school credentials, according to their age at immigration, as a result of sensitive periods in the acquisition of a second language or the structure of the education system. (Statistics Canada Research Paper, *Age at immigration and Educational Outcomes of Children*, Catalogue no. 11F0019M — No. 336, October 2011)

## IMMIGRANT POPULATION BY AGE AT IMMIGRATION FOR SURREY/WHITE ROCK COMMUNITIES 2011

Community	Total immigrants	Under 5	5-14	15-24	25-44	45+
Cloverdale	10,970	1,245	1,995	2,895	3,875	960
Fleetwood	26,035	2,005	4,165	6,835	9,475	3,555
Guildford	26,620	2,255	5,010	5,390	10,945	3,015
Newton	63,685	4,240	8,145	19,500	21,025	10,775
South Surrey	17,705	1,985	3,560	3,725	6,930	1,505
Whalley	42,825	2,885	5,830	12,120	15,285	6,705
<b>City of Surrey</b>	<b>187,840</b>	<b>14,615</b>	<b>28,705</b>	<b>50,460</b>	<b>67,535</b>	<b>26,520</b>
White Rock	4,535	465	805	985	1,850	430
<b>Total SRY/ WR</b>	<b>192,375</b> <b>(100.00)</b>	<b>15,080</b> <b>(7.8%)</b>	<b>29,510</b> <b>(15.3%)</b>	<b>51,445</b> <b>(26.7%)</b>	<b>69,385</b> <b>(36.1%)</b>	<b>26,950</b> <b>(14.1)</b>

Source: Statistics Canada, National Household Survey, 2011

In Surrey-White Rock 36% of immigrants came to Canada when they were 25-44 years.

Many were likely the parents of the children 0-14 that made up 23% of the total.

### GOVERNMENT ASSISTED REFUGEES

The latest information regarding government assisted refugees (GAR) shows 614 arriving in BC in 2013.

Of those, 31.6% or 194 individuals came to Surrey.

The top four countries of origin were Somalia (41%), Iraq (23%), Congo (12%) and Sudan (8%).

Almost 40% of these refugees were children and youth.

Age Group	No. Individuals	%
Under 6 year	21	10.8%
6-12	32	16.5%
13-18	24	12.4%
19-64	116	59.8%
65 and above	1	0.5%

Source: Immigrant Services Society of BC, GAR Statistics, 2013



## MOTHER TONGUE

In 2011, 45% of all Surrey/ White Rock residents spoke a non-official language as their mother tongue.

Over one third of elementary students (N=13,586) and 1,963 high school students were designated as ESL (English as a Second Language) learners in 2013.

Over 60% in Newton, 55% in Whalley, 50% in Fleetwood and 48% in Guildford spoke a language other than English or French as their mother tongue. Conversely, English was the dominant language in White Rock (82%), Cloverdale (79%) and South Surrey (78%).

### MOTHER TONGUE FOR SURREY/WHITE ROCK COMMUNITIES, 2011 (SINGLE RESPONSES ONLY)

Community	Total respondents	English		French		Non-official languages	
Cloverdale	53,195	42,210	79.3%	435	0.8%	10,545	19.8%
Fleetwood	56,420	27,425	48.6%	355	0.6%	28,645	50.8%
Guildford	55,865	28,550	51.1%	425	0.8%	26,895	48.1%
Newton	126,760	49,560	39.1%	760	0.6%	76,435	60.3%
South Surrey	67,375	52,380	77.7%	815	1.2%	14,180	21.0%
Whalley	90,155	40,365	44.8%	680	0.8%	49,110	54.5%
<b>City of Surrey</b>	<b>449,775</b>	<b>240,490</b>	<b>53.5%</b>	<b>3,480</b>	<b>0.8%</b>	<b>205,815</b>	<b>45.8%</b>
White Rock	18,480	15,095	81.7%	350	1.9%	3,040	16.5%
<b>Total SRY/ WR</b>	<b>468,255</b>	<b>255,585</b>	<b>54.6%</b>	<b>3,830</b>	<b>0.8%</b>	<b>208,855</b>	<b>44.6%</b>

Source: Statistics Canada 2011 Census

The predominant non-official languages were consistent with the top source countries of recent immigrants.

Punjabi : 67% in Newton and 49% in Whalley;

Mandarin: 19% in South Surrey and 12% in Guildford;

Tagalog: 13% in Guildford.

### TOP NON-OFFICIAL LANGUAGES FOR SURREY/WHITE ROCK COMMUNITIES, 2011

	Cloverdale	Fleetwood	Guildford	Newton	South Surrey	Whalley	City of Surrey	White Rock	Total SRY/WR
<b>Non-official languages</b>	<b>10,545</b>	<b>28,645</b>	<b>26,895</b>	<b>76,435</b>	<b>14,180</b>	<b>49,110</b>	<b>205,815</b>	<b>3,040</b>	<b>208,855</b>
Punjabi	3,295	11,010	2,790	51,170	1,350	24,175	93,780	160	93,940
Tagalog	700	2,590	3,480	3,105	430	3,440	13,745	155	13,900
Hindi	270	1,455	535	5,280	110	4,585	12,230	35	12,265
Mandarin	375	1,445	3,300	1,020	2,705	1,210	10,050	250	10,300
Korean	765	1,535	3,275	285	1,165	710	7,745	195	7,940
Chinese,	375	1,350	2,175	845	1,575	1,440	7,765	165	7,930
Vietnamese	315	1,775	1,460	855	60	1,575	6,035	25	6,060
Spanish	595	625	800	1,665	480	1,695	5,860	115	5,975
German	690	515	600	830	1,590	680	4,910	515	5,425

Source: Statistics Canada 2011 Census

## VISIBLE MINORITIES

B.C. had the highest proportion of visible minorities compared to other provinces in Canada, with nearly 1.2 million in the classification. That is 27.3% of people in the province who identify themselves as part of the visible minority, ahead of Ontario (25.9%) and Alberta (18.4%).

It should be noted that three out of 10 people who identified as belonging to a visible minority were born in Canada.

In the City of Surrey more than half (53%) were included in the visible minority population. Within Surrey communities that proportion was as high as 70% in Newton, 63% in Whalley, and 61% in Fleetwood where South Asians were the dominant group.

In Guildford the proportion was 55%, with Chinese making up the bulk of the visible minority community.

### VISIBLE MINORITY POPULATION IN SURREY/ WHITE ROCK COMMUNITIES, 2011

	Cloverdale	Fleetwood	Guildford	Newton	South Surrey	Whalley	City of Surrey	White Rock
Total Pop	54,160	58,190	58,280	131,800	67,355	93,555	463,340	18,540
Vis Min Pop.	12,355	35,465	32,055	92,305	12,695	58,885	243,760	2,050
<b>% VM</b>	<b>22.8%</b>	<b>60.9%</b>	<b>55.0%</b>	<b>70.0%</b>	<b>18.8%</b>	<b>62.9%</b>	<b>52.6%</b>	<b>11.1%</b>
S. Asian	5,365	17,345	5,990	73,915	3,000	36,835	142,445	410
Chinese	1,665	4,895	8,230	3,690	5,825	4,175	28,485	530
Filipino	1,600	5,235	6,955	5,655	815	6,220	26,475	330
SE Asian	810	2,945	2,545	2,015	230	4,535	13,080	-
Korean	790	1,665	3,530	230	1,120	1,050	8,380	450
Black	700	755	1,015	1,710	395	1,570	6,145	70
Latin Amer	410	730	690	1,530	285	1,695	5,335	45
Arab	100	420	1,160	580	180	820	3,265	30
Japanese	435	380	365	465	365	395	2,405	75
West Asian	80	430	450	995	95	290	2,350	-
Other	55	30	190	435	130	240	1,085	-
Multiple VM	345	625	935	1,090	240	1,060	4,295	70

Source: Statistics Canada, National Household Survey, 2011



## ABORIGINAL POPULATION

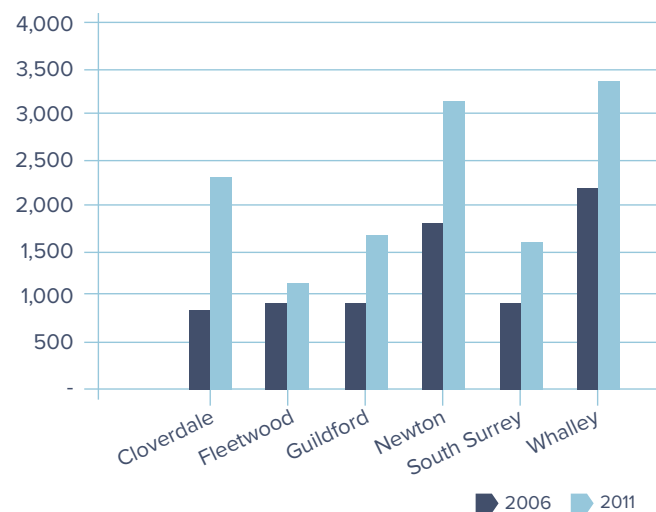
In B.C., the Aboriginal population was generally much younger than the non-Aboriginal population. Based on 2011 Census data, the median age for the Aboriginal population in B.C. was 29 years of age compared to 42 years of age for the non-Aboriginal population. The same figures for Canada were 28 and 41 years of age respectively.

### ABORIGINAL POPULATION FOR SURREY, WHITE ROCK AND BC, 2001-2011

	2001	2006	2011	% change 2001-2011
Surrey	6,895	7,630	13,305	93%
White Rock	165	290	465	182%
<b>Total SRY/WR</b>	<b>7,060</b>	<b>7,920</b>	<b>13,770</b>	<b>95%</b>
BC	170,025	196,070	267,090	57%

Source: Statistics Canada, National Household Survey, 2011. Aboriginal origin = First nations (North American Indian), Inuit and Metis

### ABORIGINAL POPULATIONS 2006 AND 2011



The 2011 Aboriginal population in Surrey almost doubled from 7,600 in 2006 to 13,000 in 2011

The highest proportions are in Cloverdale and Whalley.

### ABORIGINAL POPULATION FOR SURREY/WHITE ROCK BY COMMUNITY, 2011

Community	Total population	Aboriginal population 2011	
Cloverdale	54,155	2,320	4.3%
Fleetwood	58,190	1,075	1.8%
Guildford	58,280	1,690	2.9%
Newton	131,800	3,150	2.4%
South Surrey	67,355	1,640	2.4%
Whalley	93,555	3,430	3.7%
<b>City of Surrey</b>	<b>463,335</b>	<b>13,305</b>	<b>2.9%</b>
White Rock	18,535	465	2.5%
<b>Total SRY/ WR</b>	<b>481,870</b>	<b>13,770</b>	<b>2.9%</b>

Source: Statistics Canada, National Household Survey, 2011



Nearly 45% of the Aboriginal population in B.C. was under 25 years of age compared to nearly 28% of non-Aboriginal population.

In contrast, only 16% of the Aboriginal population was over 55 years of age compared to 30% of the non-Aboriginal population.

Based on 2011 NHS data, 47.4% of all Aboriginal children in B.C. lived with both parents compared to 72.1 % of non-Aboriginal children.

Nearly 38% of Aboriginal children lived in lone-parent families compared to nearly 21% of non-Aboriginal children in the same situation.

Almost 8% of Aboriginal children were foster children compared to less than 1% of non-Aboriginal children.

#### ABORIGINAL CHILDREN IN FAMILIES IN B.C, 2011

	Aboriginal identity	Non-Aboriginal identity
Children of only one spouse/partner in a couple (stepchildren)	11.8%	6.3%
Children of both spouses/partners in a couple, excluding stepchildren	47.4%	72.1%
Children of lone parents	37.5%	20.9%
Grandchildren living with grandparent(s) with no parents present	3.3%	0.7%
Foster children	7.4%	0.5%

Source: 2011 Census, National Household Survey, prepared by BC Stats, 2013

#### ABORIGINAL STUDENTS IN SURREY SCHOOLS

There are 1,893 elementary students and 1,273 secondary students with aboriginal ancestry (First Nations: status and non-status, Metis and Inuit) in Surrey schools. In total, these 3,166 students accounted for 4.7% of all students in the district.

Provincial funding for Aboriginal education in the BC public K-12 school system enables school districts to deliver enhanced education programs and services for Aboriginal students who self identify as being of Aboriginal ancestry.

One quarter or 854 Aboriginal students are in the Whalley area.

#### SURREY STUDENTS WITH ABORIGINAL ANCESTRY

Community	Elementary	Secondary
Cloverdale	257	205
Fleetwood	160	38
Guildford	270	200
Newton	384	203
South Surrey	173	114
Whalley	626	228
Not assigned	23	290
<b>TOTAL</b>	<b>1,893</b>	<b>1,278</b>

Data provided by Surrey School District, Planning Department, December 2013

## HOME OWNERSHIP

Most Surrey residents were home owners with a high of 85% in Cloverdale and South Surrey and a low of 57% in Whalley.

27% of owners and 38% of renters spent more than 30% of their income on shelter.

In the City of Vancouver the comparative figures were 29% and 46%

### HOUSING TENURE FOR SURREY/WHITE ROCK COMMUNITIES, 2011

Community	Total occupied dwellings	Owned		Rented	
		Count	Percentage	Count	Percentage
Cloverdale	18,890	16,050	85.0%	2,840	15.0%
Fleetwood	17,785	14,005	78.7%	3,780	21.3%
Guildford	19,655	13,585	69.1%	6,075	30.9%
Newton	38,475	27,270	70.9%	11,210	29.1%
South Surrey	26,830	22,840	85.1%	3,990	14.9%
Whalley	31,210	17,915	57.4%	13,290	42.6%
<b>City of Surrey</b>	<b>152,845</b>	<b>111,660</b>	<b>73.1%</b>	<b>41,190</b>	<b>26.9%</b>
White Rock	9,865	6,725	68.2%	3,140	31.8%
<b>Total SRY/ WR</b>	<b>162,710</b>	<b>118,385</b>	<b>72.8%</b>	<b>44,330</b>	<b>27.2%</b>

Source: 2011 Census, National Household Survey

### MOBILITY

Compared to 2006 the number of movers was down from 17.4% to 13.6% in 2011.

Cloverdale showed the highest mobility with 16.5% having moved to a different address from the previous year.

Whalley was second at 15% and South Surrey at 14%.

Newton and Fleetwood showed the lowest number of movers at 12%.

### MOBILITY STATUS (THOSE WHO MOVED TO A DIFFERENT ADDRESS) FROM PREVIOUS YEAR, SURREY/WHITE ROCK BY COMMUNITY, 2011

Community	Total Pop	Non-movers		Movers	
		Count	Percentage	Count	Percentage
Cloverdale	53,370	44,575	83.5%	8,795	16.5%
Fleetwood	57,640	50,960	88.4%	6,685	11.6%
Guildford	57,810	50,020	86.5%	7,790	13.5%
Newton	129,935	114,465	88.1%	15,470	11.9%
South Surrey	66,885	57,380	85.8%	9,505	14.2%
Whalley	92,585	78,485	84.8%	14,100	15.2%
<b>City of Surrey</b>	<b>458,230</b>	<b>395,880</b>	<b>86.4%</b>	<b>62,350</b>	<b>13.6%</b>
White Rock	18,460	15,915	86.2%	2,545	13.8%
<b>Total SRY/ WR</b>	<b>476,690</b>	<b>411,795</b>	<b>86.4%</b>	<b>64,895</b>	<b>13.6%</b>

Source: 2011 Census, National Household Survey

## EDUCATION

Half of the population of Surrey had some post-secondary credential. In South Surrey and White Rock two thirds of the residents had attained this level of schooling.

Overall 31% had only a high school education with the highest proportion in Whalley at 33%.

### POPULATION 15+ BY HIGHEST LEVEL OF SCHOOLING 2011

	Total population aged 15+ yrs	High school diploma or equivalent		Incomplete certificate; diploma or degree		Postsecondary certificate; diploma or degree	
Cloverdale	42,550	13,485	32%	5,610	13%	23,460	55%
Fleetwood	47,460	15,300	32%	9,105	19%	23,050	49%
Guildford	47,700	13,710	29%	8,700	18%	25,285	53%
Newton	103,825	33,910	33%	22,735	22%	47,180	45%
South Surrey	56,760	14,925	26%	6,805	12%	35,035	62%
Whalley	76,020	24,825	33%	18,470	24%	32,720	43%
<b>City of Surrey</b>	<b>374,310</b>	<b>116,150</b>	<b>31%</b>	<b>71,425</b>	<b>19%</b>	<b>186,730</b>	<b>50%</b>
White Rock	16,800	4,565	27%	1,610	10%	10,625	63%

Source: 2011 Census, National Household Survey

\*Postsecondary certificate diploma or degree' includes 'apprenticeship or trades certificates or diplomas' 'college CEGEP or other non-university certificates or diplomas' and university certificates diplomas and degrees.

\*\* Comparisons with other data sources suggest that the category 'University certificate or diploma below the bachelor's level' was over-reported in the NHS. This category likely includes some responses that are actually college certificates or diplomas bachelor's degrees or other types of education (e.g. university transfer programs bachelor's programs completed in other countries incomplete bachelor's programs non-university professional designations). We recommend users interpret the results for the 'University certificate or diploma below the bachelor's level' category with caution.

## LABOUR FORCE

### BY OCCUPATION

This table shows the variation by occupation across communities in 2011.

A quarter of all residents were involved in sales and service occupations.

Residents of South Surrey dominated management occupations (17%).

Those in trades, transport and equipment operations were most likely in Newton (21%) and Whalley (24%).

### LABOUR FORCE BY OCCUPATION, 2011

	City of Surrey	Cloverdale	Fleetwood	Guildford	Newton	South Surrey	Whalley	White Rock
All occupations	<b>239,470</b>	31,435	30,845	30,270	66,740	33,130	47,055	9,915
	<b>100%</b>	100%	100%	100%	100%	100%	100%	100%
Management	<b>25,060</b>	4,315	2,820	2,905	6,065	5,650	3,315	1,450
	<b>14%</b>	9%	10%	9%	17%	7%	15%	10%
Business, finance and administration	<b>38,430</b>	5,825	4,920	5,145	10,245	5,910	6,380	1,820
	<b>19%</b>	16%	17%	15%	18%	14%	18%	16%
Natural /applied sciences	<b>12,560</b>	1,585	1,730	2,070	2,975	2,395	1,805	590
	<b>5%</b>	6%	7%	4%	7%	4%	6%	5%
Health	<b>14,395</b>	1,715	2,145	1,845	3,885	2,215	2,595	705
	<b>5%</b>	7%	6%	6%	7%	6%	7%	6%
Education, law, social, comm. / govt	<b>22,495</b>	3,825	2,870	3,020	5,140	4,455	3,190	1,360
	<b>12%</b>	9%	10%	8%	13%	7%	14%	9%
Art, culture, recreation, sport	<b>5,150</b>	890	485	675	1,160	1,250	690	530
	<b>3%</b>	2%	2%	2%	4%	1%	5%	2%
Sales and service	<b>59,590</b>	6,510	7,810	7,890	17,210	6,985	13,185	2,150
	<b>21%</b>	25%	26%	26%	21%	28%	22%	25%
Trades, transport and equipment	<b>44,130</b>	5,180	5,680	4,885	14,065	3,165	11,160	1,015
	<b>16%</b>	18%	16%	21%	10%	24%	10%	18%
Natural resources, agriculture	<b>5,610</b>	600	715	330	1,795	600	1,570	155
	<b>2%</b>	2%	1%	3%	2%	3%	2%	2%
Manufacturing and utilities	<b>12,060</b>	990	1,680	1,515	4,210	505	3,160	130
	<b>3%</b>	5%	5%	6%	2%	7%	1%	5%

Source: 2011 Census, National Household Survey

---

## POVERTY

---

In British Columbia in 2011, families in the top 20% had incomes 10.3 times more than families in the bottom 20%. (Statistics Canada, Indicators of Well Being)

For the City of Surrey as a whole, 19% of children less than 18 years lived in poverty in 2011; 18% of children under 6 lived in poverty.

One in four children and youth lived in low income situations in Guildford and Whalley.

The Surrey Food Bank reported seeing 500 babies per week in 2013.

### INCIDENCE OF LOW INCOME AMONGST CHILDREN IN SURREY AND WHITE ROCK , 2010 (AFTER TAX MEASURE\*)

	Children under 18 (%)	Children under 6 (%)
Cloverdale	9	7
Fleetwood	17	17
Guildford	26	26
Newton	19	18
South Surrey	12	10
Whalley	25	26
<b>City of Surrey</b>	<b>19</b>	<b>18</b>
White Rock	16	5

Source: Statistics Canada, National Household Survey, 2011

\*After-tax income is total income - which includes government transfers - minus income taxes. It is also referred to as disposable income.

**Note:** For the 2011 National Household Survey (NHS) low-income statistics are presented based on the after-tax low-income measure (LIM-AT). This measure is not related to the low-income cut-offs (LICO) presented in the 2006 Census and prevalence rates are conceptually not comparable. Because of the sensitivity of certain income indicators to differences in methodology and response patterns direct comparisons to establish trends with low-income estimates from other household surveys administrative programs or the 2006 Census are discouraged. (Statistics Canada re Low-income estimates in the 2011 National Household Survey)

### FIRST CALL, POVERTY REPORT CARD, 2011

BC's child poverty rate dropped to 14.3 % in 2010, still the worst rate of any province except Manitoba, and higher than the Canadian average of 13.7 %.

The number of poor children was 119,000 - or about one of every seven BC children. About two thirds, or 80,000, of these children lived in Greater Vancouver.

BC also had the most unequal distribution of income among rich and poor families with children. The ratio of the average incomes of the richest 10% compared to the poorest 10% was the worst of any province at 13.8 to one.

Nearly 66% or 78,000 of the poor children in 2010 lived in two-parent families, and nearly 17% or 20,000 poor children lived with lone-parent mothers.

BC had the worst poverty rate at 11.6% of any province for children living in two-parent families.

In 2010, 43% of the poor children in BC – 41,300 children – lived in families with at least one adult working full-time, full-year, exposing the problem of low-wage jobs.

Most poor families with children live many thousands of dollars below the poverty line. Poor two-parent families had incomes \$13,800 below the poverty line on average.





[www.childrenspartnershipsurreywr.com](http://www.childrenspartnershipsurreywr.com)